

Epson AX6-A901S



The ultimate  
cobot solution

**EPSON®**

# Collaborative automation just got an upgrade



Combining advanced Swiss engineering with state-of-the-art connectivity options and intuitive software, the Epson AX6 represents a complete collaborative automation solution for a wide range of industries.

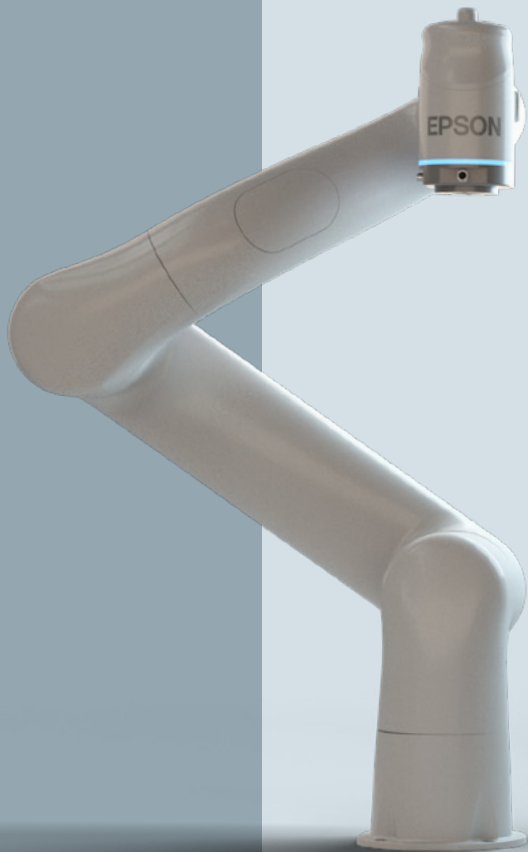
Precision, flexibility and outstanding repeatability are paired with simple programming for easy creation of new applications. All executed to the highest standards of robot safety. And with advanced technology features, the AX6 is ready to evolve ensuring your operations stay efficient well into the future.



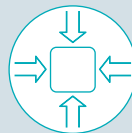


## Exceptional performance with user-friendly operation

The Epson AX6 comes backed with a sophisticated suite of customer-oriented features.



Ultra-rigid and lightweight robot arm made of carbon fibre



Sleek and compact design for space-saving installation



High energy-saving capabilities of up to 40%\*



User-friendly Python and robot block programming options



AC/DC power supply integrated as standard for fixed or AMR-mounted operation



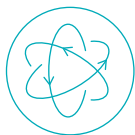
Integrated user lines and state-of-the-art connectivities for seamless machine integration



# High performance with a small footprint

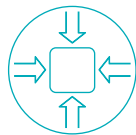
Crafted from high-tech, ultra-rigid carbon, the Epson AX6 cobot arm is compact and hard-wearing, delivering power, agility and precision for the most sophisticated applications.

The low weight and efficient motor mechanics provide energy-saving benefits, whilst user-friendly features, advanced connectivity options and continuous operation capabilities minimise downtime, even in challenging conditions.



## Exceptional precision

With a 6kg payload, a 900mm arm reach and 0.03mm repeatability, the AX6 enables perfect execution of a wide variety of tasks.



## Sleek and compact design

With its smooth and screwless surface, the AX6 is visually appealing and easy to clean, while the rigid carbon arm makes it compact and precise.



## Excellent safety standards

The AX6 meets the latest industry standards and machine directives and includes an extensive range of safety features including SS2, SLS, SLP and PFL.



## Hardwearing design

Suitable for a full range of industrial environments thanks to IP54 protection class and ISO 5 cleanroom classification, included as standard.



## Versatile mounting options

Mount the cobot in various positions such as table top, wall, ceiling or even on a mobile platform.



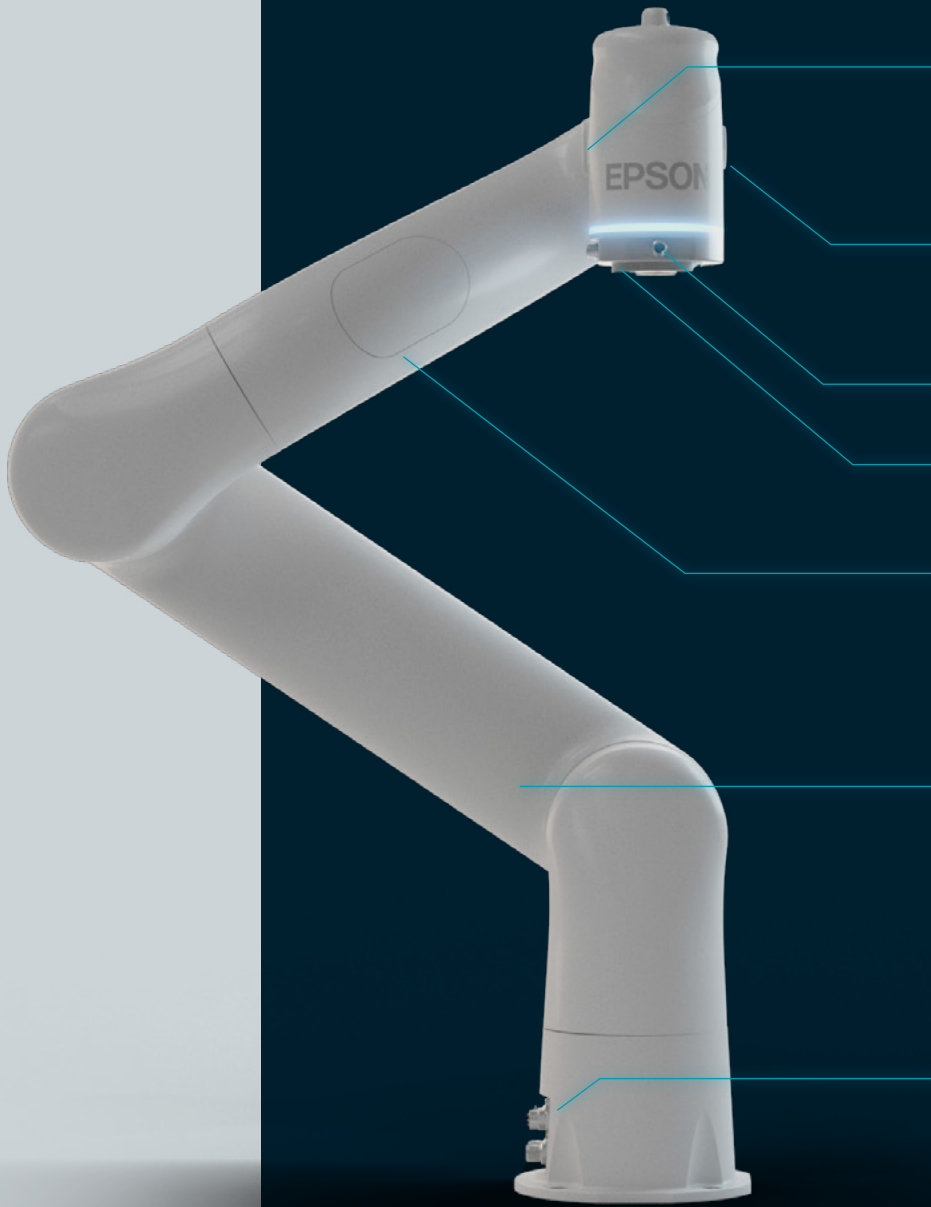
## Energy-saving operation

At 17kg, the AX6 is the lightest cobot in its class, combined with efficient motor mechanics it helps lower energy use for more cost-efficient operations.



Multi-functional user buttons for simple, fast and safe operation

Multi-status LED ring



2 x 4mm pneumatic connections

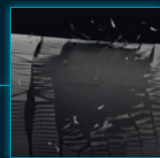


1 x Ethernetport (M12)

2 x M8 tool connectors

Endless rotation of J6

Smooth surface and screwless design



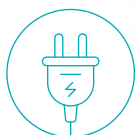
Lightweight, ultra-rigid carbon structure



Easy to connect industrial ports

# Highly flexible operation with a powerful, compact controller

Achieve smooth operation and functionality with ease thanks to the Epson RC-A101 controller. Advanced technology and integrated safety features are paired with a user-friendly interface to ensure high performance and enhanced productivity.



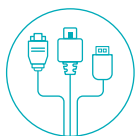
#### Embrace ultimate versatility

An integrated AC/DC power supply and compact, lightweight 19-inch format allow for fixed use or easy AMR mounting.



#### Ensure easy integration with your operations

Digital and analogue input/output options are available for signal exchange of the controller and end-of-arm tools. Communication protocols and interfaces include TCP/IP, Modbus, REST and ROS 2 Interface.



#### Secure state-of-the-art connectivity

An accessible front-side panel offers smart connectivity options via Ethernet, USB, and Display Port, for seamless communication with other machinery and software systems.



#### Guarantee high performance

Integrated web-based programming software backed by an IPC allows the cobot to maintain consistent high performance.



#### Oversee safe operations

The AX6 is compliant with the latest industry standards and machine directives for personnel safety in collaborative environments.

# Simple and intuitive program building

Make executing even the most complex applications easy with the Epson AX portal. A secure, customisable web interface ensures set-up and operation is simple.

With maintenance and testing capabilities included, and customer support features, your operations are backed by more than 40 years of experience in the automation industry.



## Python programming

Use your existing Python programming skills to create even complex robot applications.



## Block-programming

Robot block-programming commands, fully integrated modules and libraries make automation easy, even without programming experience.



## Conduct risk-free testing with a 3D simulator

Eliminate the risk of downtime with offline testing and programming phases via an integrated 3D simulator.



## Open web-based programming

Monitoring, maintenance and testing capabilities are all available via a secure, customisable web interface.



## Learn as you go with wizards and guides

Easy-to-use guides and templates make creating tools, pallets or defining systems swift and seamless.



## Customer remote support system

All RC+ 8.0 customer support functionalities are integrated for end-to-end support.

# Made for the toughest jobs

The Epson AX6 can be used in a wide variety of environments thanks to IP54-level protection and ISO 5 cleanroom classification.

It supports a full suite of applications including handling, assembly, inspection, pick and place, end-of-line and palletising making it versatile enough for use across a range of industries.



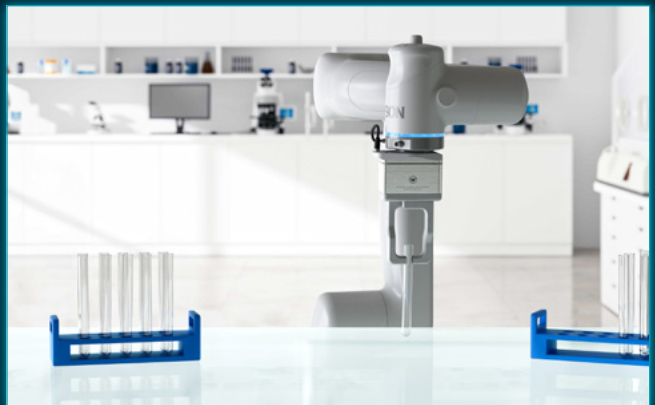
Metal industry - Handling operations



Automotive - Assembly



Electronics - Inspection



Life science - Pick and Place



Logistics - End of line



Logistics - Palletising

# Seamless integration - the key for efficient automation

Our Epson Compatible Program allows you to build your own application with the Epson AX series. State-of-the-art connectivity and a standard flange connection (ISO50) allow you to select robot peripherals from any third-party supplier.

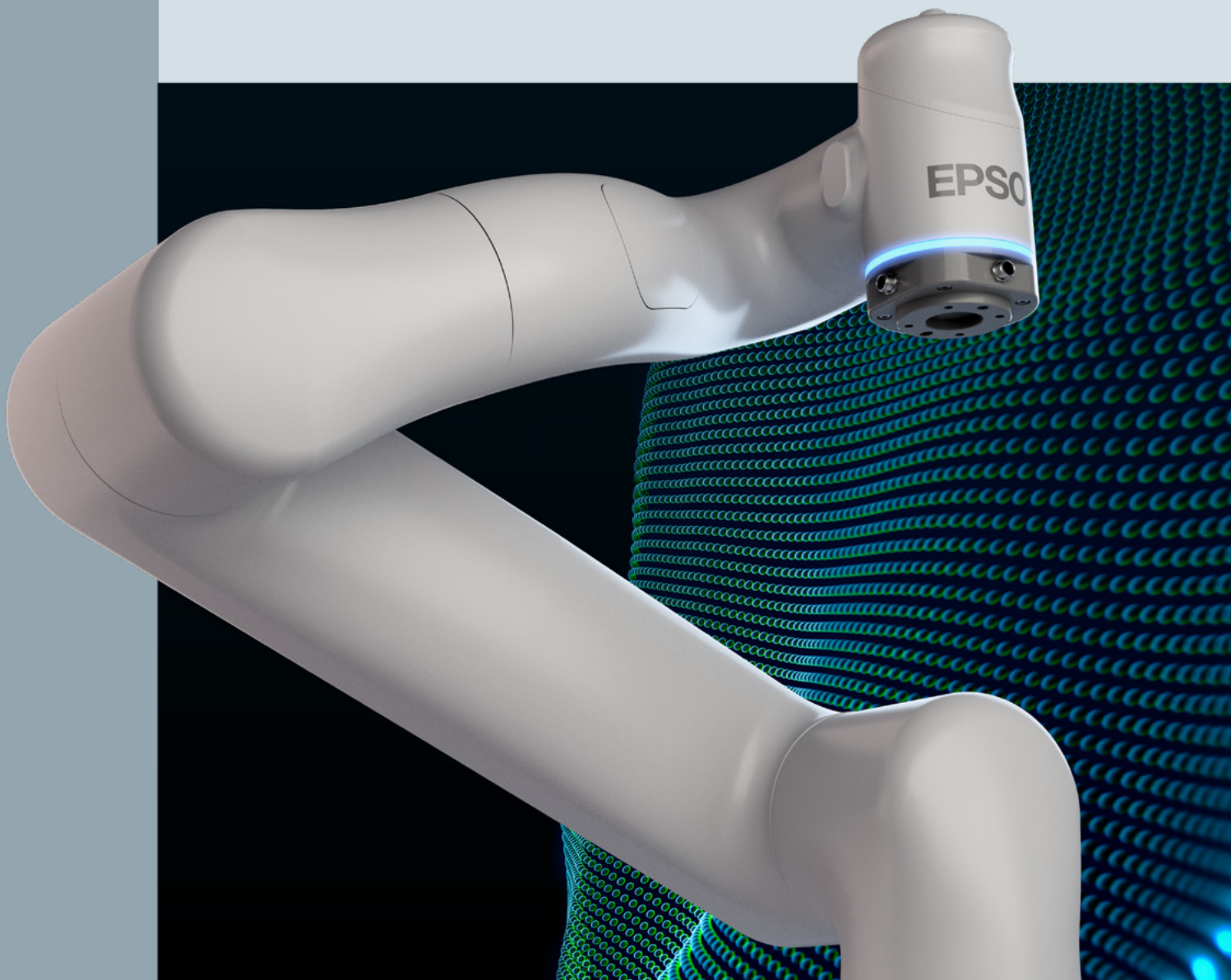
A variety of tools and components are supported, including grippers, suction cups, and more for ultimate flexibility to enhance your operations.



# Technical specification

	Epson AX6-A901S	
Payload	Maximum (kg)	6
Arm length	P-Point: J2-J5 center (mm)	900
	J2-J6 Flange surface	990
Repeatability (ISO 9283)	Joints #1-#6 (mm)	0.03
Max. motion range	Joint #1 (deg)	+/-207
	Joint #2 (deg)	+/-155
	Joint #3 (deg)	+/-160
	Joint #4 (deg)	+/-200
	Joint #5 (deg)	+/-155
	Joint #6 (deg)	∞
Max. operating speed	Joint #1 (deg/s)	180
	Joint #2 (deg/s)	180
	Joint #3 (deg/s)	180
	Joint #4 (deg/s)	300
	Joint #5 (deg/s)	300
	Joint #6 (deg/s)	300
	Cartesian at TCP (mm/s)	2000
Weight		17 kg
Mounting type		Floor, Wall, Ceiling
Environment specification	IP classification	IP54
	Clean room classification (ISO 14644-1)	ISO 5
	Working temperature	0 to 40°C
Robot flange	I/O's	4 × Digital (24V, 2A), 4 × Analogue, RS485, 1 × Ethernet (M12)
	Compressed Air	2 × 4mm quick coupling
	Flange connection (ISO9409-1)	50-4-M6
Applicable Controller		Epson RC-A101
Robot cable length		0.5/1.5/3/5/10 m
Supported devices		Epson AX Tablet Holder, Epson AX Light grip switch
Safety functions		SS2, SOS, SLS, SLP, PFL, STO, HGC
Certificates		ISO-10218-1 (2025), ISO 13849-1, ISO 15066, ISO 14644-1

	<b>Epson RC-A101</b>
Dimensions	440 × 220 × 140mm
Weight	6 kg
Mounting type	Table top, Rack mount (19 inch)
IO's	24 × 24V DC, 5A
	Digital: 16 × I/O's, 1A each
	Analogue: 4 × I/O's, [0-10V] or [4-20mA]
Connections	1 × Ethernet (RJ45), 2 × USB 3.0, 2 × Mini display
Communication protocols	TCP/IP, ROS 2, REST
Safety I/O's	10 × Input, 6 × Output
Power type	AC/DC
Power supply	100-240V 50-60Hz (AC)/48V (DC)
Power consumption	190 W (AC)/160 W (DC)
Controller cable length	5 m





EPSON

## Discover the next generation of cobot technology from Epson.

### Get in touch:

Epson Deutschland GmbH  
Schiesstraße 49  
40549 Düsseldorf  
Germany  
Telefon: +49 (0) 211 5422 9007  
Telefax: +49 (0) 211 54229 493  
info.ms@epson.de  
E-mail: info.ms@epson.eu



[www.epson.eu/cobot](http://www.epson.eu/cobot)

\* The comparison between the robots is measured on the movement of the ISO Cube, as per ISO 9283. This measures the energy usage for one cycle of the test movement in the ISO Cube, and compares the cobot against ABB's IRB 1200-5/0.9 industrial robot, using the same speed and payload for both. The energy usage for one cycle of the ISO Cube Motion of the cobot was at least 40% lower for the complete cycle.



Please recycle  
responsibly

For further information please contact your local Epson office or visit [www.epson.eu/contact-us](http://www.epson.eu/contact-us)

Algeria +213 770 938 617 Austria 01 253 49 78 333 Belgium +32 (0)2 792 04 47 Czech +420 246 037 281 Denmark 44 50 85 85  
Ethiopia +254 700760366 Finland 09-3158 3267 France 09 74 75 04 04 (Cost of local call, operator charges may apply) Germany +49 (0) 2159/92 79 500  
Greece (0030) 211 198 62 12 Hungary 06800 147 83 Ireland 01 436 7742 Israel (+972)-3-5751833 Italy 02-660321 10 (0,12 €/min)  
Kenya +254 207 904 566 Luxembourg +352 27600692 Middle East +9714 2677638 Morocco +212 520 134 040 Netherlands +31 (0)20 708 5099  
Norway +47 67 11 37 00 Poland +48 22 295 37 25 (0,16 zł/min) Portugal 707 222 111 Romania 0040 214025024 Slovakia +421 232 786 682  
Southern Africa +27 (0) 10 109 5320 Spain 93 592 15 00 Sweden +46 8 5051 3701 (Mobilsamtal – 0,99 kr/min, Lokala samtal – 0,30 kr/min,  
Utlandssamtal – 0,89 kr/min) Switzerland 022 592 7923 Tanzania +255 080 011 1014 Tunisia +216 9811 5564 Turkey (0212) 3360303  
Uganda +256 205 491 148 United Kingdom 0871 42 37766 (+10p per minute plus network extras) West Africa +2349046648285

EPSON®